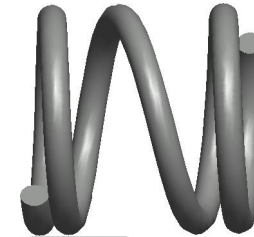
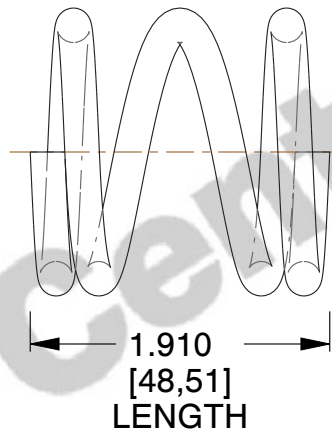


NOTES:

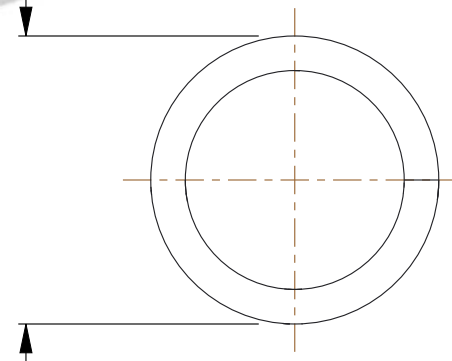
1. Material : Music Wire
2. Finish : Glod Irridite
3. Ends : Closed
4. Total Coils : 3.500
5. Sugg. Max. Deflection : 0.040 (in)
6. Sugg. Max. Load : 1.600 (lbs)
7. All Drawing Dimensions are in Inches [mm]



Ø 0.015
[0,38]
WIRE DIA



Ø 0.125
[3,18]
O.D



COMPONENT		SPRINGS	
10195 COMPRESSION SPRINGS		UNIT	
		INCH [mm]	
		SHEET	1 of 1