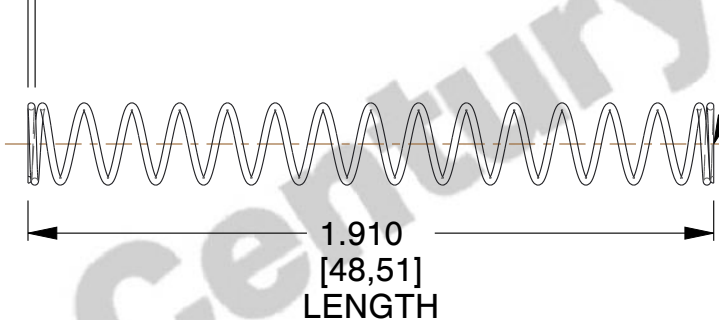


NOTES:

1. Material : Music Wire
2. Finish : Glod Irridite
3. Ends : Closed and Ground
4. Total Coils : 16.900
5. Sugg. Max. Deflection : 1.500 (in)
6. Sugg. Max. Load : 3.300 (lbs)
7. All Drawing Dimensions are in Inches [mm]

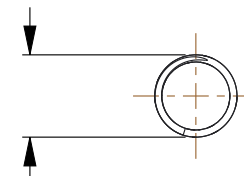


Ø 0.026
[0,66]
WIRE DIA



GROUND
SURFACE

Ø 0.300
[7,62]
O.D



COMPONENT		SPRINGS	
70822 COMPRESSION SPRINGS		UNIT	
		INCH [mm]	
		SHEET	1 of 1