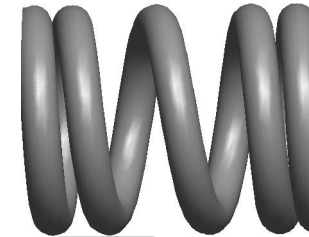
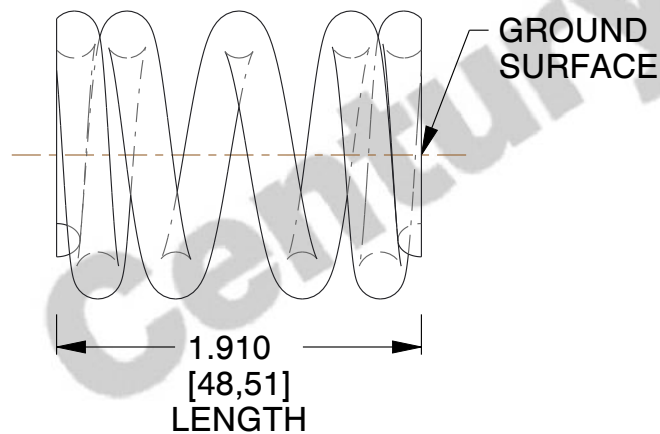


**NOTES:**

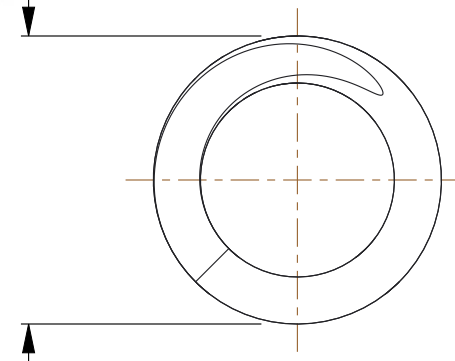
1. Material : Music Wire
2. Finish : Glod Irridite
3. Ends : Closed and Ground
4. Total Coils : 4.750
5. Sugg. Max. Deflection : 0.110 (in)
6. Sugg. Max. Load : 20.000 (lbs)
7. All Drawing Dimensions are in Inches [mm]



Ø 0.049  
[1,24]  
WIRE DIA



Ø 0.300  
[7,62]  
O.D



COMPONENT		SPRINGS	
70984  COMPRESSION SPRINGS		UNIT	
		INCH [mm]	
		SHEET	1 of 1