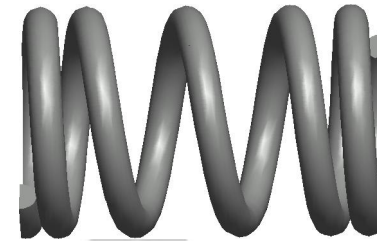
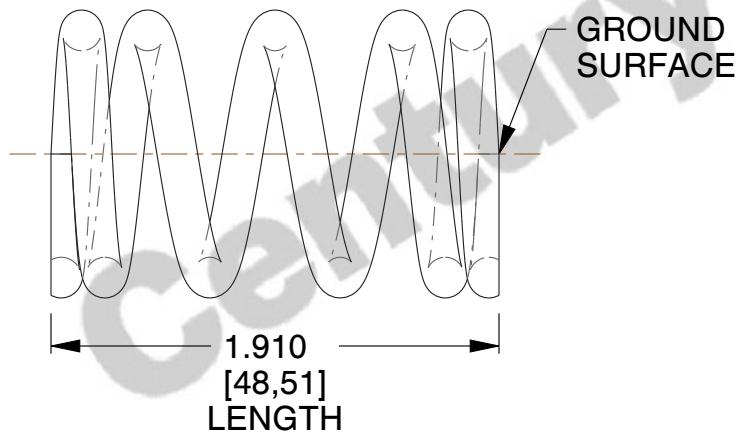


**NOTES:**

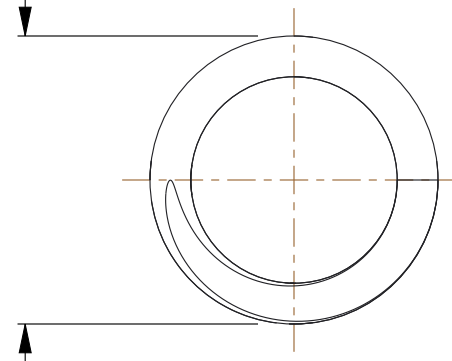
1. Material : Music Wire
2. Finish : Glod Irridite
3. Ends : Closed and Ground
4. Total Coils : 5.500
5. Sugg. Max. Deflection : 0.190 (in)
6. Sugg. Max. Load : 18.000 (lbs)
7. All Drawing Dimensions are in Inches [mm]



Ø 0.051  
[1,30]  
WIRE DIA



Ø 0.360  
[9,14]  
O.D



COMPONENT		SPRINGS	
71220 COMPRESSION SPRINGS		UNIT	
		INCH [mm]	
		SHEET	1 of 1