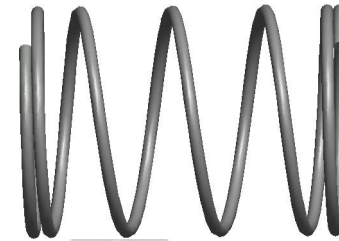
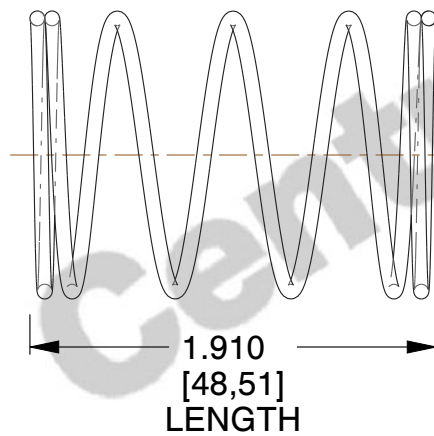


**NOTES:**

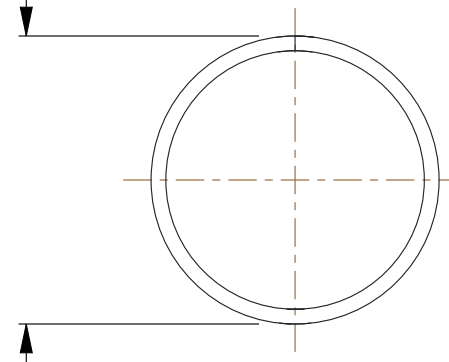
1. Material : Music Wire
2. Finish : Glod Irridite
3. Ends : Closed
4. Total Coils : 6.000
5. Sugg. Max. Deflection : 0.330 (in)
6. Sugg. Max. Load : 0.300 (lbs)
7. All Drawing Dimensions are in Inches [mm]



Ø 0.016  
[0,41]  
WIRE DIA



Ø 0.312  
[7,92]  
O.D



COMPONENT		SPRINGS	
FF-3  COMPRESSION SPRINGS		UNIT	
		INCH [mm]	
		SHEET	1 of 1