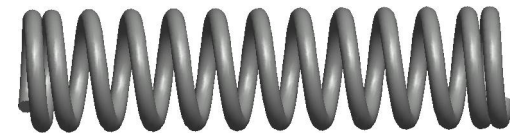
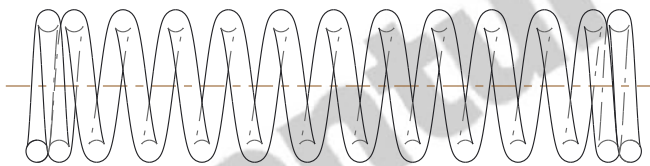


NOTES:

1. Material : Music Wire
2. Finish : Glod Irridite
3. Ends : Closed
4. Total Coils : 13.000
5. Sugg. Max. Deflection : 0.120 (in)
6. Sugg. Max. Load : 0.710 (lbs)
7. All Drawing Dimensions are in Inches [mm]

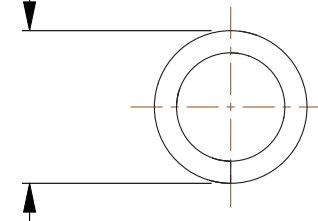


Ø 0.009
[0,23]
WIRE DIA



1.910
[48,51]
LENGTH

Ø 0.062
[1,57]
O.D



COMPONENT		SPRINGS	
J-36 COMPRESSION SPRINGS		UNIT	
		INCH [mm]	
		SHEET	1 of 1