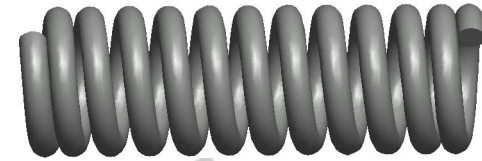
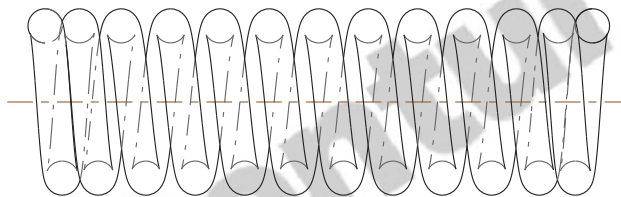


NOTES:

1. Material : Music Wire
2. Finish : Glod Irridite
3. Ends : Closed
4. Total Coils : 12.000
5. Sugg. Max. Deflection : 0.080 (in)
6. Sugg. Max. Load : 2.700 (lbs)
7. All Drawing Dimensions are in Inches [mm]

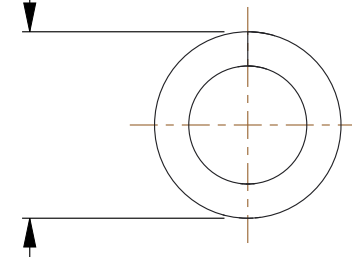


Ø 0.020
[0,51]
WIRE DIA



1.910
[48,51]
LENGTH

Ø 0.109
[2,77]
O.D



COMPONENT		SPRINGS	
J-48 COMPRESSION SPRINGS		UNIT	
		INCH [mm]	
		SHEET	1 of 1