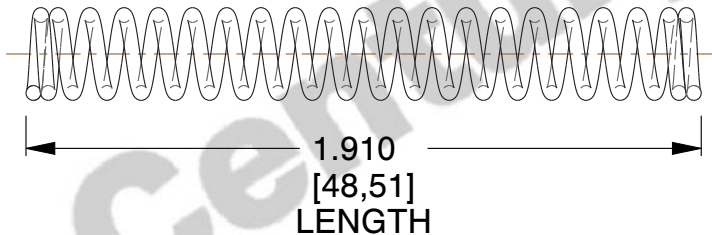


**NOTES:**

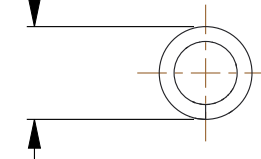
1. Material : Music Wire
2. Finish : Glod Irridite
3. Ends : Closed
4. Total Coils : 21.000
5. Sugg. Max. Deflection : 0.350 (in)
6. Sugg. Max. Load : 3.700 (lbs)
7. All Drawing Dimensions are in Inches [mm]



Ø 0.020  
[0,51]  
WIRE DIA



Ø 0.125  
[3,18]  
O.D



COMPONENT		SPRINGS	
KK-82  COMPRESSION SPRINGS		UNIT	
		INCH [mm]	
		SHEET	1 of 1