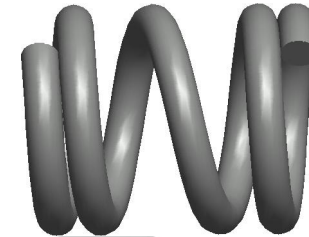
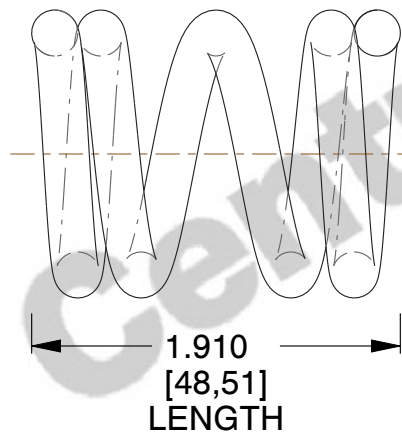


NOTES:

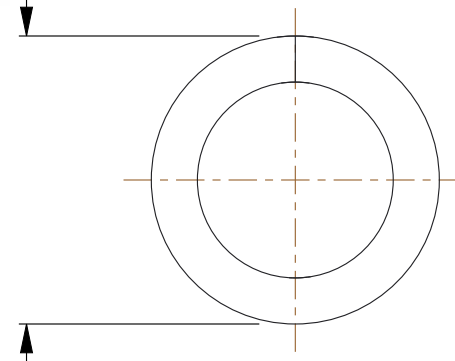
1. Material : Music Wire
2. Finish : Glod Irridite
3. Ends : Closed
4. Total Coils : 4.000
5. Sugg. Max. Deflection : 0.040 (in)
6. Sugg. Max. Load : 3.700 (lbs)
7. All Drawing Dimensions are in Inches [mm]



Ø 0.020
[0,51]
WIRE DIA



Ø 0.125
[3,18]
O.D



| COMPONENT | | SPRINGS | |
|----------------------------------|--|-----------|--------|
| LL-57 COMPRESSION SPRINGS | | UNIT | |
| | | INCH [mm] | |
| | | SHEET | 1 of 1 |