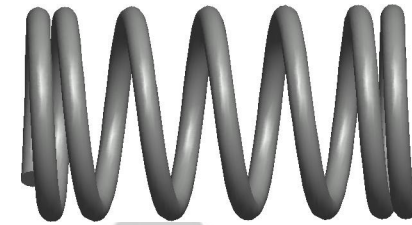
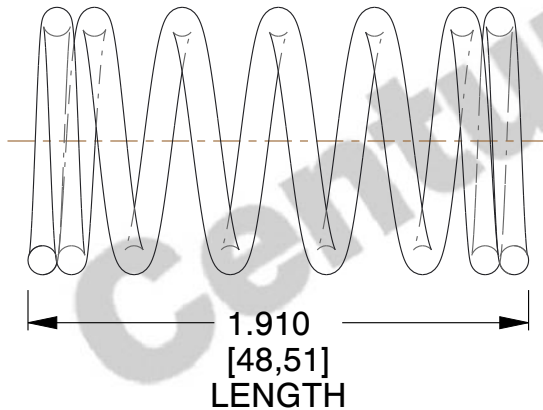


NOTES:

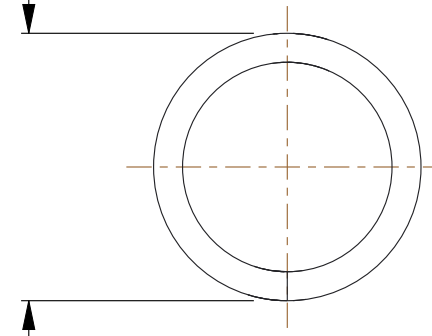
1. Material : Music Wire
2. Finish : Gold Iridite - GI
3. Ends : Closed
4. Total Coils : 7.000
5. Sugg. Max. Deflection : 0.200 (in)
6. Sugg. Max. Load : 2.300 (lbs)
7. All Drawing Dimensions are in Inches [mm]



Ø 0.022
[0,56]
WIRE DIA



Ø 0.203
[5,16]
O.D



COMPONENT		SPRINGS	
MM-50 COMPRESSION SPRINGS		UNIT	
		INCH [mm]	
		SHEET	1 of 1